



**West Yellowstone
IMD Opener
Team Leaders Meeting**

6:00 PM

December 15, 2023

Zoom

WELCOME !

AGENDA

Organizing Committee

Roll Call

Confirmation of Entries

Jury

Weather Forecast

Start Order

Draws & Seed Procedure

Race Courses

Stadium

Technical Briefing

TD Comments

Awards

Miscellaneous

Adjournment

Organizing Committee



- ▶ Chief of Competition – Peggy Lynn
- ▶ Race Secretary – Leanne Schuh
- ▶ Chief of Course – Marc Sheppard
- ▶ Chief of Timing – Mac Read/Sportstats
- ▶ Chief of Stadium – Travis Hansen
- ▶ Volunteer Coordinator - Brenda Holland
- ▶ Logistics – Bobbie Perez
- ▶ Technical Delegate – Robert Landis
Assistant – Andy Weenig
- ▶ WYSEF Program Director – Rachel Spence

Roll Call

- ▶ **BBNT - Bogus Basin Nordic Team**
- ▶ **BSSEF - Big Sky Ski Education Foundation**
- ▶ **BSF - Bridger Ski Foundation**
- ▶ **MEA - Montana Endurance Academy**
- ▶ **GNST - Glacier Nordic Ski Team**
- ▶ **JHSC - Jackson Hole Ski and Snowboard Club**
- ▶ **MNBSC - McCall Nordic and Biathlon Ski Club**
- ▶ **PCSS - Park City Ski and Snowboard**
- ▶ **SOHO - Team Soldier Hollow**
- ▶ **SVSEF - Sun Valley Ski Education Foundation**
- ▶ **TUNA - The Utah Nordic Alliance**
- ▶ **GTSSF – Grand Targhee**
- ▶ **ICE BADGERS - Missoula**
- ▶ **WYSEF - West Yellowstone Ski Education Foundation**

Confirmation of Entries

- ▶ **Double Check Start List**
- ▶ **Anyone with changes please meet with Leanne immediately**
- ▶ **Bibs will be separated by team and available by 7:30 am at the Taylor Fork Cabin in Stadium area**

Jury

- ▶ Technical Delegate – Rob Landis
- ▶ Technical Delegate Asst. – Andy Weenig
- ▶ Chief of Competition – Peggy Lynn

Weather Forecast



- ▶ **Friday Night**

- ▶ Low 8F
- ▶ Partly Cloudy Winds SE 3mph

- ▶ **Saturday**

- ▶ High 36F
- ▶ Partly Sunny Winds SW 3mph in afternoon

- ▶ **Saturday Night**

- ▶ Low 6F
- ▶ Partly Cloudy Winds Calm

- ▶ **Sunday**

- ▶ High 35F
- ▶ Mostly Sunny Winds Calm

Sprint Race Start Order

START TIMES ARE APPROXIMATE

09:00 AM START TIME -15 Second Start Interval

U20/U18 Women, U16 Girls

U20/U18 Men, U16 Boys

U14 Girls/U14 Boys

U12/U10 Girls Mass Start

U12/U10 Boys Mass Start

10:45 U14 Girls/Boys Final

11:00 Srs. Final

11:30 U20/U18 Women/Men Quarterfinals

12:30 U20/U18 Women/Men Semifinals

12:55 U20/U18 Women B/A , Men B/A Finals

13:35 U16 Girls/Boys Quarterfinals

14:35 U16 Girls/Boys Semifinals

15:00 U16 Girls B/A, Boys B/A Finals

Distance Race Start Order

START TIMES ARE APPROXIMATE

9:00 AM Start - 30 second interval for all classes

9:00 2 KM U10/U12 Boys/Girls

5 Minute Break

9:11 3 KM U14 Boys/Girls

15 Minute Break

9:35 5 KM U16 Boys/Girls

15 Minute Break

10:25 10 KM U18/U20/Srs Men

5 Minute

10:55 10 KM U18/U20/Srs Women

Timing Procedure

▶ **Sprint Qualifying Round**

- ▶ All racers will wear chips and bibs
- ▶ U14 and Seniors keep bibs, but turn in chips at end of Qualifying
- ▶ U16 – U20s must turn in bibs and chips

▶ **Sprint Heats**

- ▶ U14, Srs Final – Hand Sequenced with original bibs
- ▶ All heat qualifiers U16 – U20 require new bibs and chips

▶ **Distance Race**

- ▶ All racers wear chips and bibs

Draws and Seed Procedure

▶ **SPRINT RACE**

- ▶ U16: USSSA Sprint Points
- ▶ U18 and older: Best of USSSA or FIS Sprint points
- ▶ Best Points First
- ▶ U14 and Younger: Random Draw

▶ **DISTANCE RACE**

- ▶ U16: USSSA Distance Points
- ▶ U18 and older: Best of USSSA or FIS Distance points
- ▶ B, A, C, D, E
- ▶ U14 and Younger: Random Draw

Courses

SPRINT - ALL 1.5 KM Orange

DISTANCE –

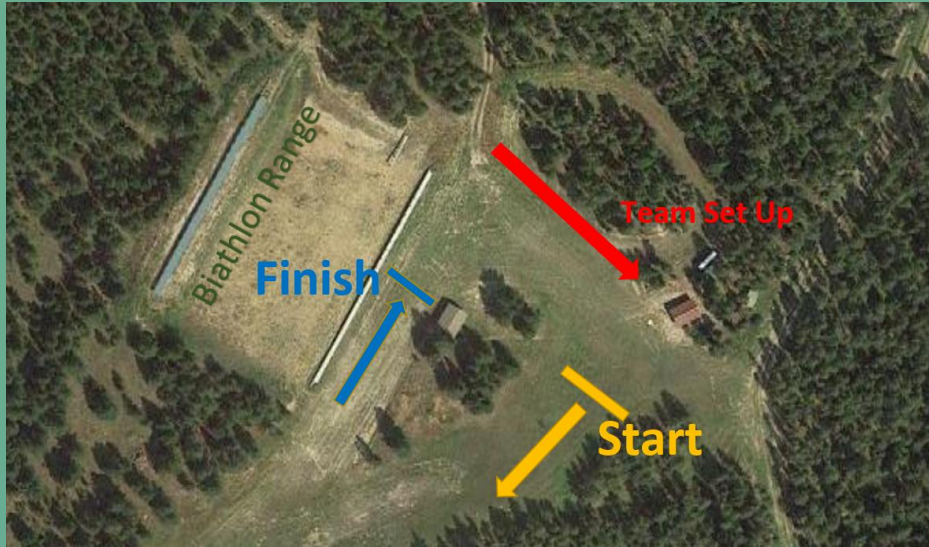
U10/U12 2 KM Follow signs

U14 3 KM Follow signs

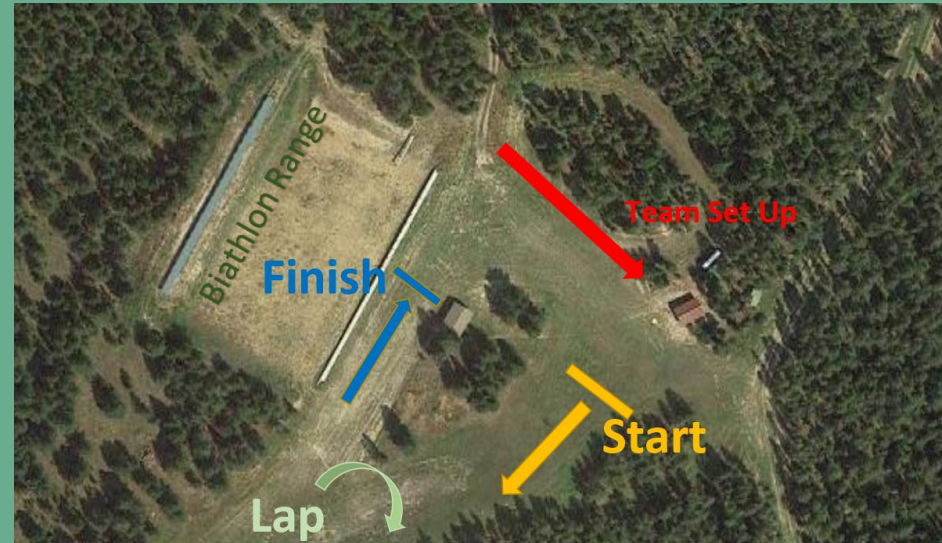
U16 Parade Loop, 5 KM Lap, Finish

U20/U18/Srs Parade Loop, 5 KM 2 laps, Finish

Stadium Set-Up



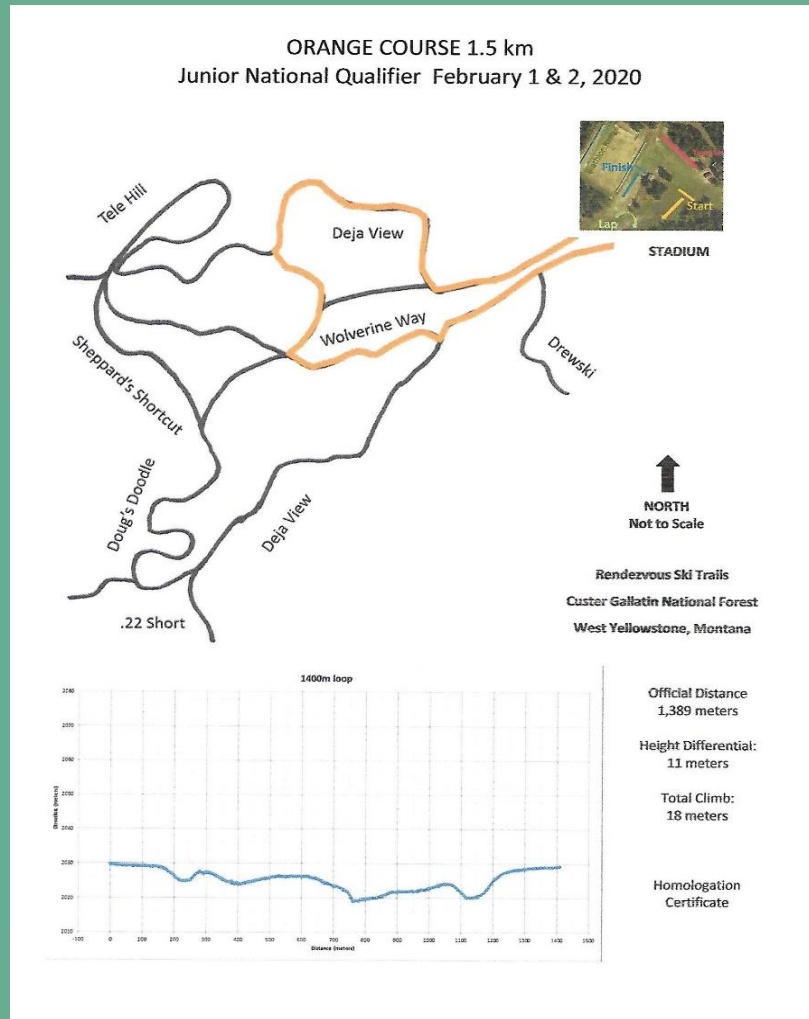
Stadium for Saturday's Sprint Races



Stadium for Sunday's Distance Races

1.5 KM

SPRINT COURSE FOR EVERYONE ON SATURDAY



2 KM

U12 COURSE ON SUNDAY (FOLLOW SIGNS)



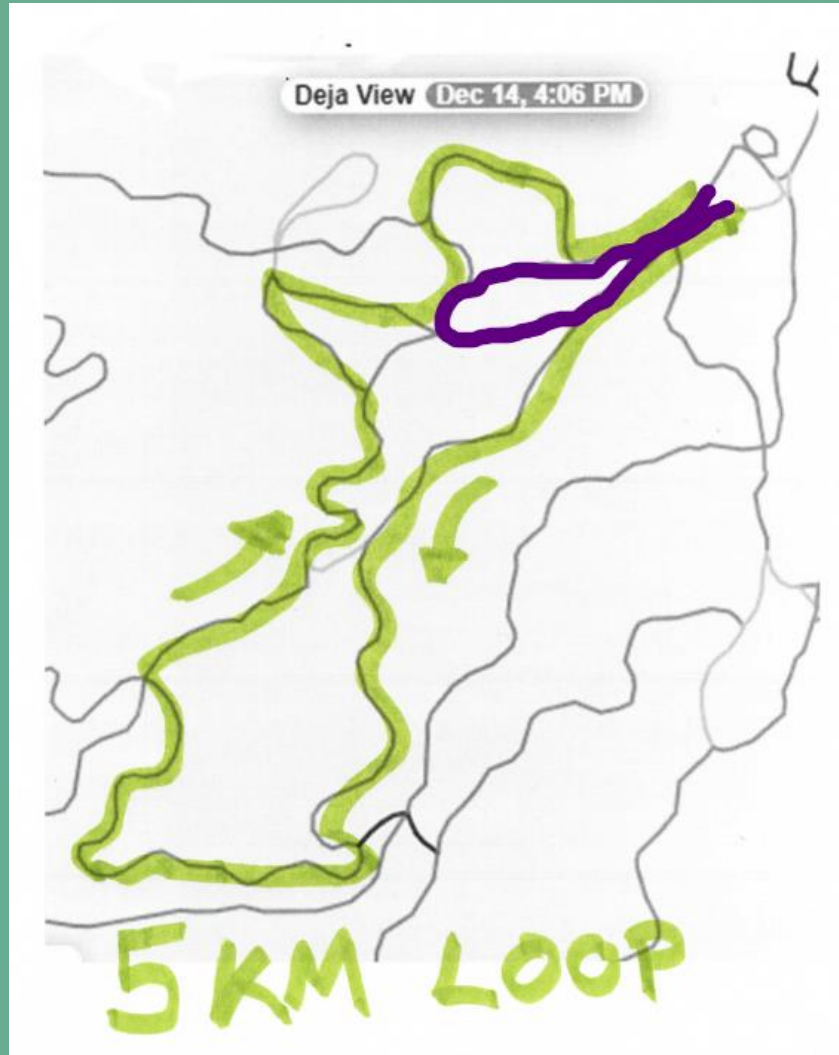
3 KM

U14 COURSE SUNDAY (Follow signs)



5 KM and 10 KM Race Course

Parade Loop, U16 1 Lap, U18/U20/Srs 2 Laps on Sunday



Technical Briefing

- ▶ **Saturday – Freestyle Sprints**
 - ▶ No classic tracks
 - ▶ 15 second interval starts
 - ▶ 30 advance to Finals per age class
 - ▶ U14 Girls/Boys – 8 advance for 1 final heat each
 - ▶ Seniors – Advance to 1 final heat
- ▶ **Sunday – Distance**
 - ▶ One set of classic tracks best line
 - ▶ 30 second interval starts

Technical Briefing, cont.

- ▶ It is the competitor's responsibility to know the course. Preview was today 9 am to 4 pm
- ▶ We will attempt to close junctions when they are not in use, but due to varying competitor speeds this may not mean that every competitor has a 'closed' course
- ▶ Remind racers about 'tracking' in an interval start race vs. mass start

Technical Briefing, cont.

- ▶ **NO NIGHT SKIING**
- ▶ **Do not ski on the courses after 6PM**
- ▶ Racers and coaches (2) wear bibs outside of clothing
- ▶ Course is **CLOSED** for warm-up and wax testing
- ▶ Coaches w/bibs only on course after race start
- ▶ No skiing in the opposite direction of race flow
- ▶ Remove skis and walk if you are going to travel in the opposite direction of race flow

TD Comments

- ▶ TD – Rob Landis
- ▶ TDA – Andy Weenig
- ▶ General Comments

TD Comments

- First of all, welcome and excited to start the new IMD season. I am so grateful to be skiing.
- Huge shout out to the West Yellowstone OC—it is amazing what can be done on inches of snow.
- Also a thank you to Will and Jackson hole for backstopping the event.
- Our job is to help insure a safe and fair event. Please let's work together to honor the Safe Sport guidelines. Coaches please make sure to wear your bibs.
- For the classic race on Sunday there will be a technique zone and marked turning zones. First race of the season is a really good time to review turning technique and classic guidelines, We hope to have most of our interactions with skiers be educational.
- Lastly, thanks to all the coaches and teams for all you do to support our skiers.
- Please don't hesitate to find us if you have any concerns.

IMD Wax Protocol

NO FLOURO WAXES

Saturday: SWIX HS 6

Sunday: SWIX HS 6

Awards

All awards are at the Stadium

SATURDAY – At the conclusion of final heats for each age class

SUNDAY – At the conclusion of each age class (after protest period)

Miscellaneous

- ▶ Ski Passes Required for Everyone except Volunteers on the list
- ▶ Gear Shuttle starts at 7:00 am at the trailhead building on both days (3 snowmobiles and tubs)
- ▶ Please thank the volunteers!

GOOD LUCK AND HAVE A GREAT RACE!